



# ES-R700

Ultrasound System



IMAGING SYSTEMS



## DESIGNED FOR HIGH EXPECTATIONS

Powered by VLucid platform, ES-R700 with ultrasound scanning experience redefined, provides both clarity and ease of use with better ergonomics, easier scanning and shared service at premium level for clinicians from General Imaging, Womenhealth and Cardiovascular to drive your practice efficiency ahead.

### Excellent penetration

Featuring high-performance hardware architecture, ES-R700 delivers the extraordinary image quality with great clarity, superior consistency and excellent penetration



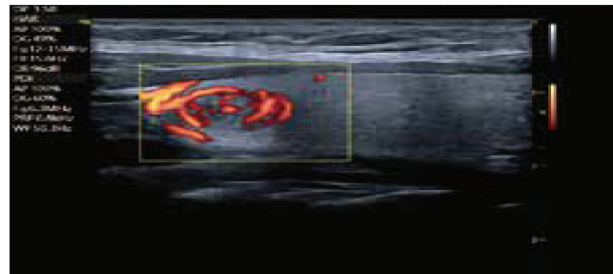
### Superior resolution

Up to 25MHz high resolution system capability, adding more than 30% of wideband frequencies to improve resolution and sensitivity for better diagnosis.



### Sophisticated blood flow sensitivity

The increased color Doppler processing helps provide more diagnostic confidence with improved blood flow detection and enhanced color performance.



### Intuitive vessel display

VLuminous Flow, an innovative color flow technology which enhances blood flow visualization and provide an impression of 3D-like flow display.



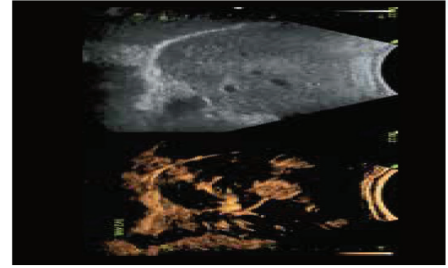
## ADVANCED FEATURES

### Shear Wave Elastography (VShear)

A non-invasive method to detect the velocity of the shear-waves propagated through the targeted area and provide quantitative tissue characteristic information.

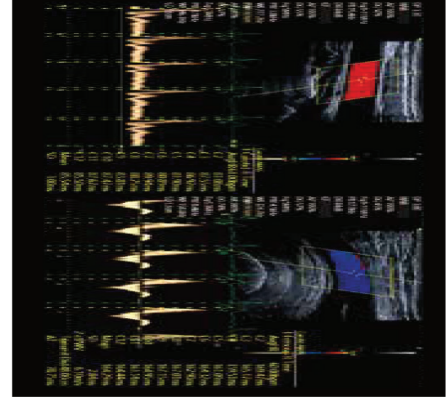
### Contrast Imaging

The ultrasound contrast agent resonates for the low pressure (MI) ultrasound, thereby enhances the micro-vascular signal with superior spatial resolution. The observed tissue perfusion and its enhancement characteristics are useful in quantitative lesion differentiation



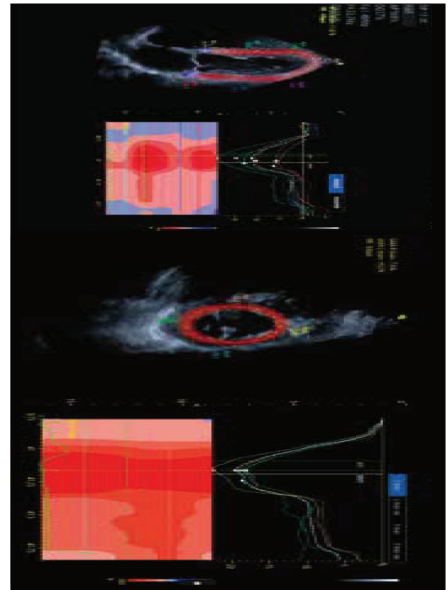
### Automatic Measurement of Arterial Stiffness (AMAS)

An automatic tool for cf Pulse Wave Velocity calculation, which is an effective indicator for evaluating arterial stiffness and assessment of early arteriosclerosis.



### Strain Imaging

for precise evaluation of myocardial movement  
Strain imaging describes as strain curve the underlying myocardial region abnormality, either in the same or various images, which can better reflect the strength of local myocardial deformation during systole and diastole, thus reflecting the motion abnormality during the cardiac cycle.







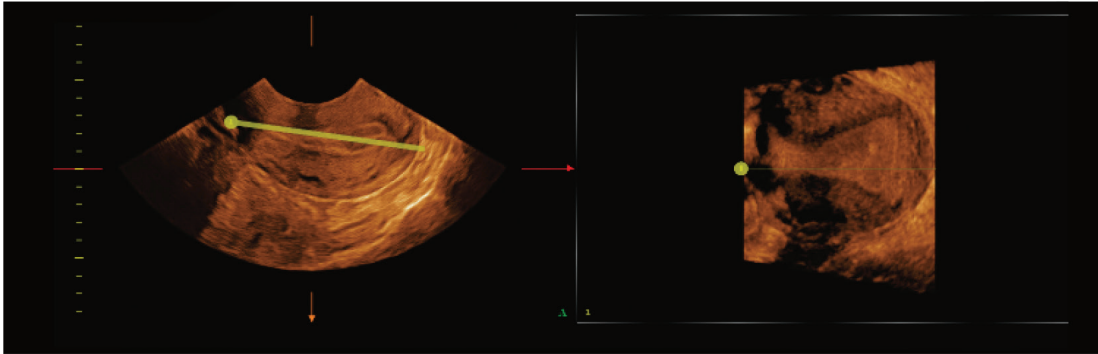
## ADVANCED FEATURES

### Hysterosalpingography (HSG)

Ultrasound 3D imaging combined with microbubble contrast technology (CBI), providing structure visualization of fallopian tubes in three dimensional imaging.

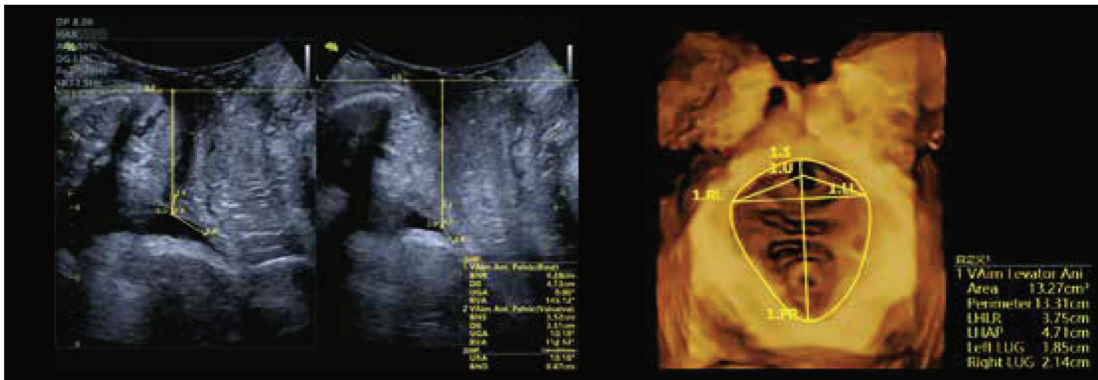
### Free View

Free view obtains any plane from a 3D or 4D volume by simply drawing a line or curve through a structure. This technology enables views of even irregular shaped structures not attainable in 2D imaging.



### VAim Ant. Pelvic and VAim Levator Ani

An automatic measurement tool for pelvic, VAim Levator Ani and Ant. Pelvic, providing pelvic measurement results with one touch, which enables users to assess pelvic structure for postpartum women in an easy and accurate way.

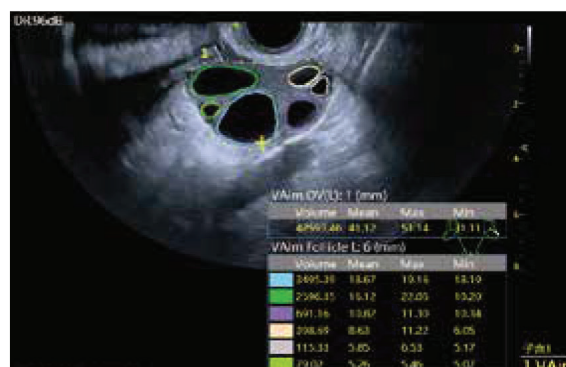


VAim Ant. Pelvic in 2D

VAim Levator Ani in 3D

### VAim Follicle

An advanced tool for follicle calculation, which can automatically identify follicles on a given 2D image, draw its boundary with different colors and measures its volume for a rapid assessment, dedicated for women's reproductive healthcare.







## ADVANCED FEATURES

### VAid Breast

VAid breast increases the accuracy and productivity of breast diagnosis in real-time or on stored images and cine-loops.

It enables fully automatic lesion detection, measurement and BI-RADS categorization, which significantly improves the efficiency.

# INTELLIGENT SOLUTIONS

### VAid Liver

With just one-click, VAid Liver can automatically detect common focal and diffuse diseases of the liver in real-time or on stored images and displays quantitative analysis of the lesion. VAid Liver significantly improves the efficiency and diagnostic accuracy in early screening and detection of liver diseases.



### VAid Thyroid

VAid Thyroid provides a non-invasive approach for detection and assessment of thyroid nodules to avoid unnecessary interventions. It automatically detects and recognizes single or multiple lesions in real-time scanning and displays the size, border characteristics and TI-RADS classification of the lesion, which greatly improves the diagnostic accuracy and efficiency.





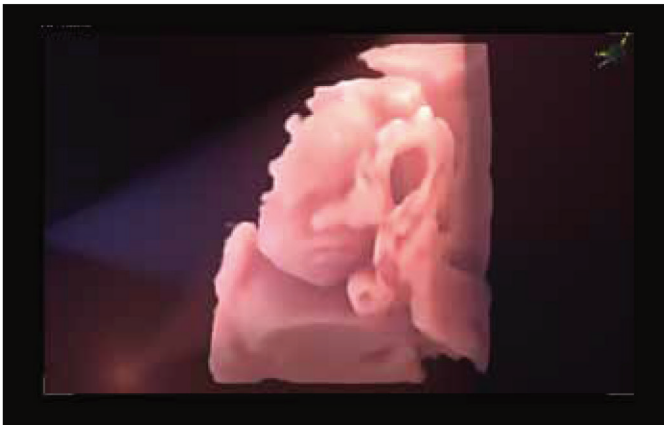
## INTELLIGENT SOLUTION

### VAim OB

An automatic measurement tool for fetal biometric and growth analysis. User can activate the measurement items (BPD, OFD, HC, AC, FL, HL) and get the results with one simple touch, which is dedicated to simplify the obstetric ultrasound examinations and improve measurement accuracy.

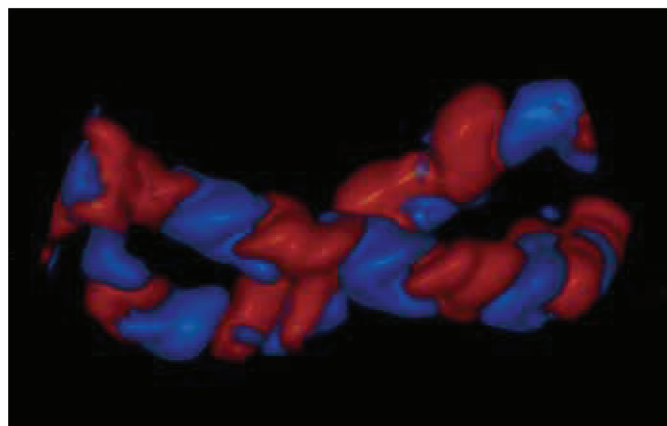
## Light Lab

A new 3D rendering technology that allows user to customise the position and direction of the virtual light sources, which displays the internal structure details more clearly and enhances the three-dimensional perception.



## Color 3D

Color 3D applies advanced acquisition and rendering technology to provide improved visualization and structure expression, helps users better understand natural hemodynamics of vascular networks, like umbilical cord and fetal heart.





# SEAMLESS WORKFLOW



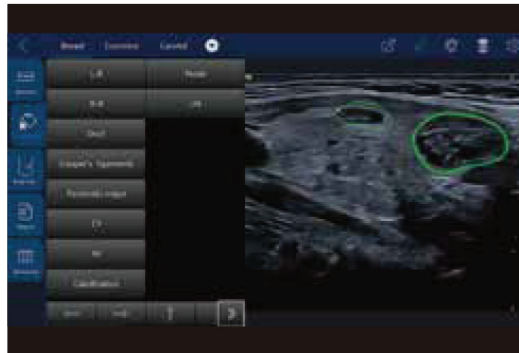
## Background transfer

Archive supports background export without interrupting the actual scan



## Finger-draw comments

Support to use finger to draw comment in free style, which is very helpful for remote diagnosis or online training



## VR report

As a customer-centric tool, VR report allows users to define and import the report template, and then the system will auto generate related measurement items based on the imported template, which can greatly improve the work efficiency

**BREAST ULTRASOUND REPORT**

NAME	YN BREAST	GENDER	Female	AGE	10y
PATIENT ID	2020054001	EXAM DATE	19-09-2020	REF DR	
CLINICAL HISTORY (Prepubertal lump)					

BREAST LESION					
Lesion 1 (R)	Length	1.81cm	Width	1.55cm	Height
	Dist. to Nipple	1.70cm			

BREAST LESION DESCRIPTION					
Location (Clock)	2/1 clock	Location region	axillary	Shape	oval
Orientation (Clock)	parallel to chest	Orientation	parallel	Echo-pattern	hypoechoic
Margins	irregular/flow	Calcification	no calcification	Associated info	vascularity no
Posterior Echo	no features	Colorization	no colorization	Associate info	vascularity no
Additional info		US BRADS	BI-RADS 1	US Elastography	0-III

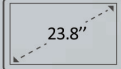
LYMPH NODE					
Length Node1 (R)	Length	1.61cm	Width	1.55cm	Height
	Dist. to Nipple	1.70cm			


  


RIGHT BREAST	LEFT BREAST








- 

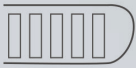
1 23.8" large monitor
- 

2 Tilttable 13.3"/15.6" touch screen
- 

3 Endocavity probe holder
- 

4 Gel warmer
- 

5 Built-in battery for 1.5-hour continuous scanning
- 

6 Height and direction adjustable console
- 

7 5 active ports